

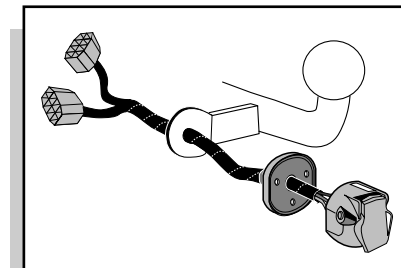
**Einbauanleitung Elektrosatz  
Anhängervorrichtung mit 12-N Steckdose  
lt. DIN/ISO Norm 1724**

**Instructions de montage du faisceau  
électrique pour crochet d'attelage  
conforme à la norme  
DIN/ISO 1724 prise 12-N**

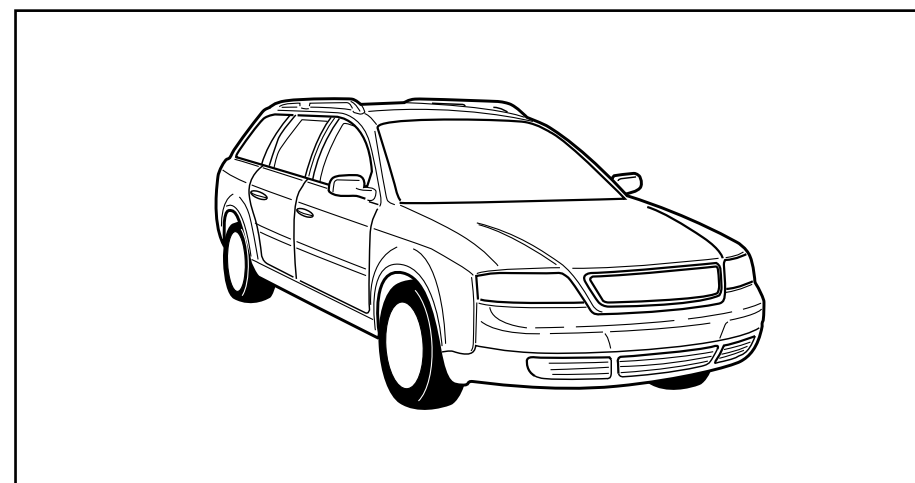
**Fitting instructions electric wiringkit  
towbar with 12-N socket up to  
DIN/ISO norm 1724**

**Montage-handleiding elektrokabelset voor  
trekhaak met 12-N contactdoos  
vlg. DIN/ISO norm 1724**

**Monteringsvejledninger for det elektriske  
ledningsføringssæt for trækstang med 12-N  
stikdåse, DIN/ISO, norm 1724**

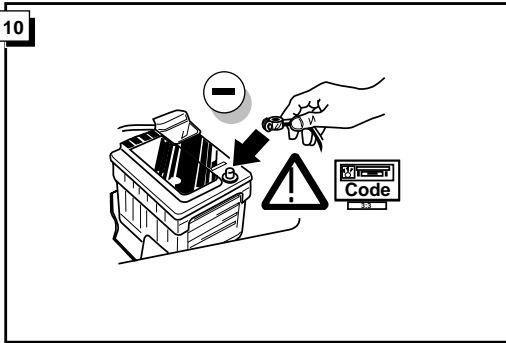


**AUDI A6 AVANT 1998- + 2002-  
Without Check Control**



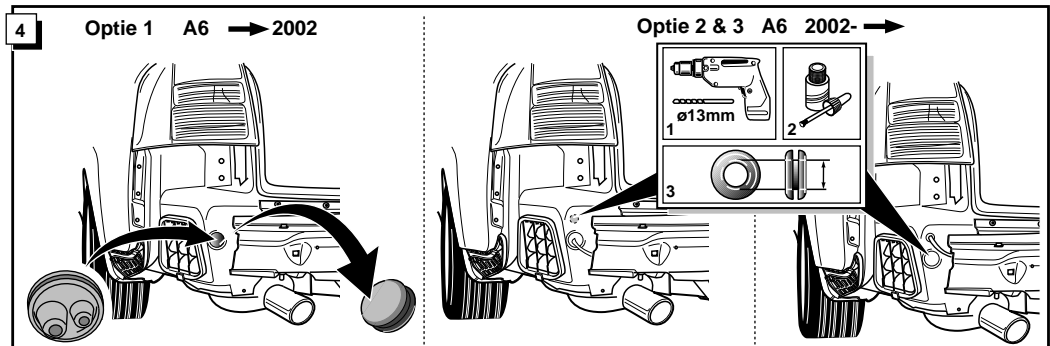
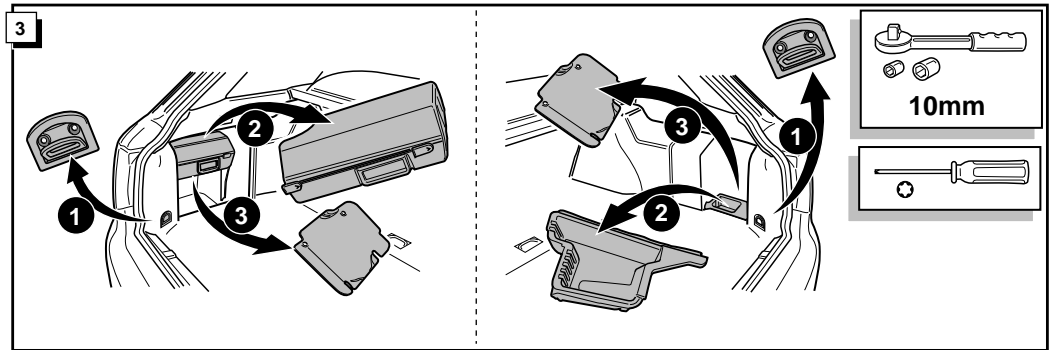
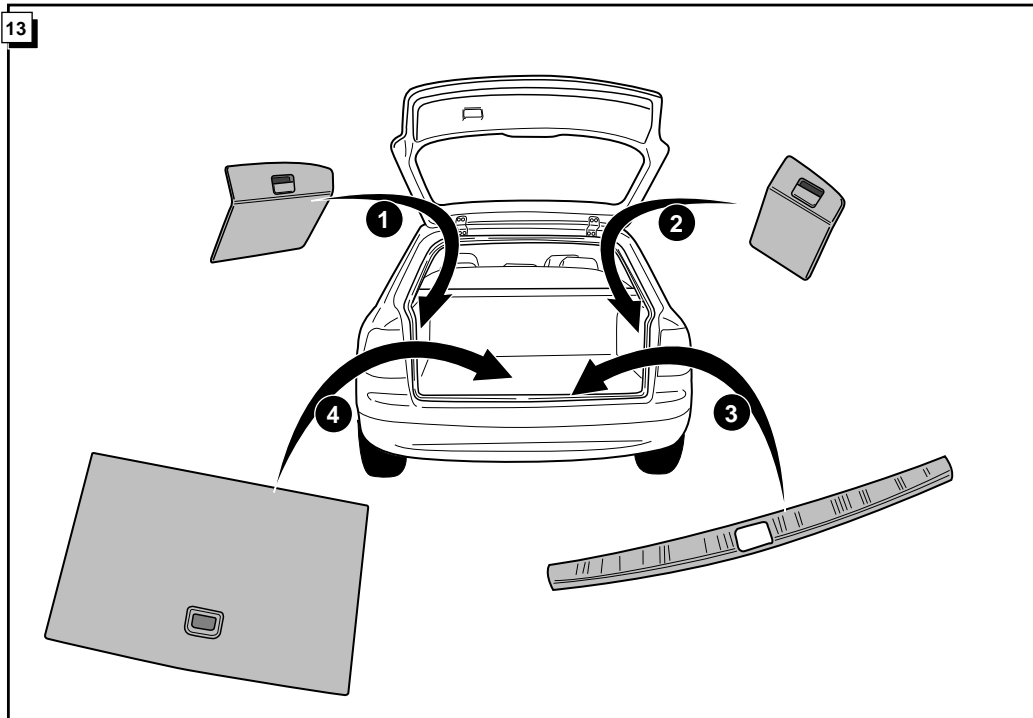
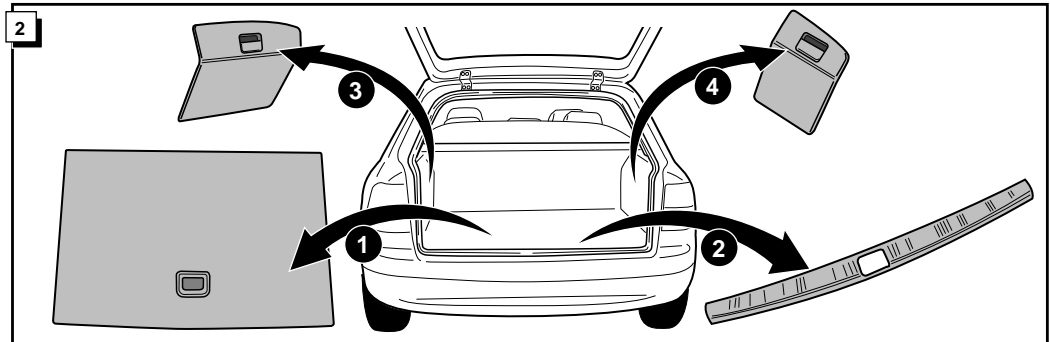
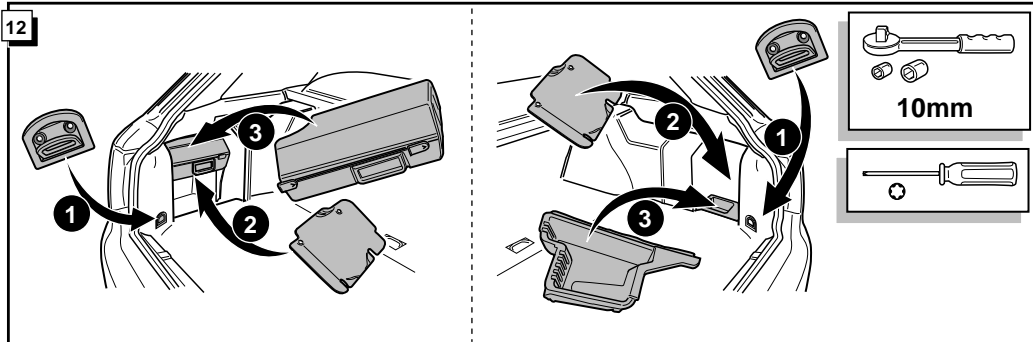
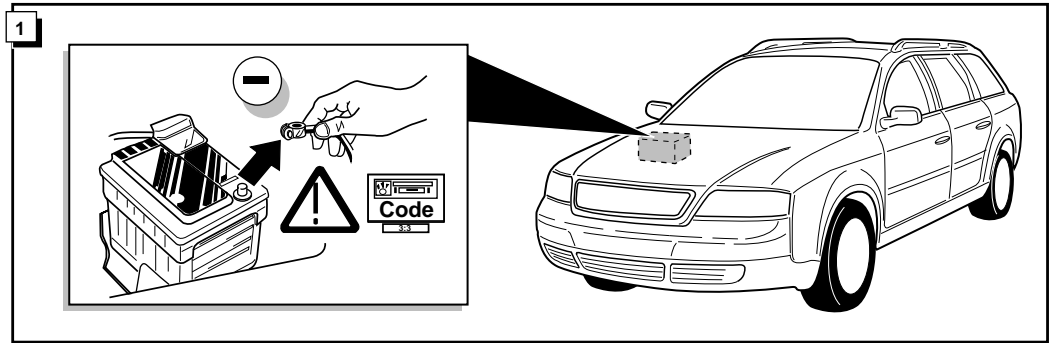
Bestel Nr.: AU-006-BB



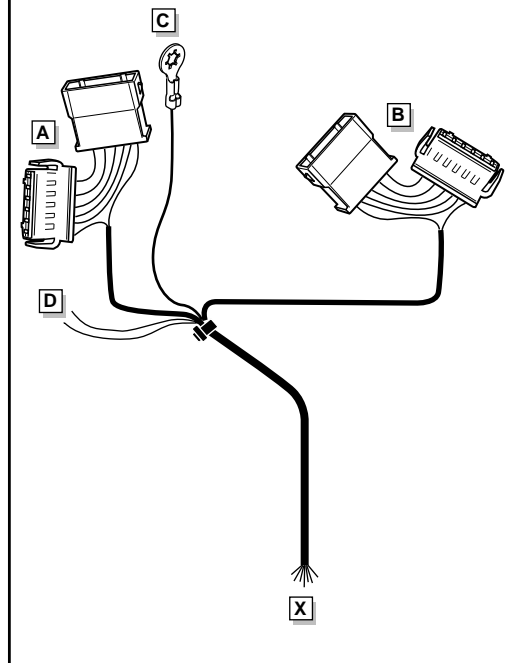


11

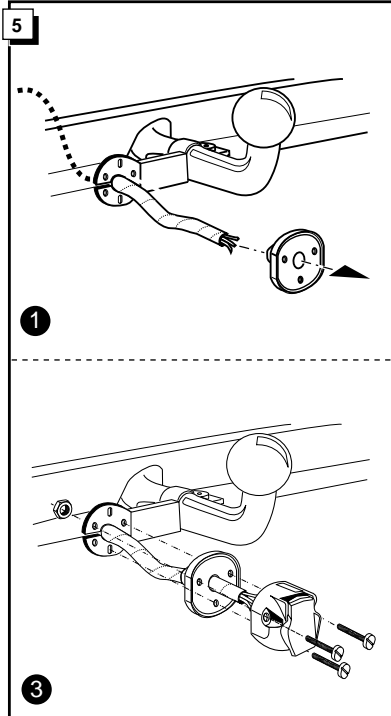
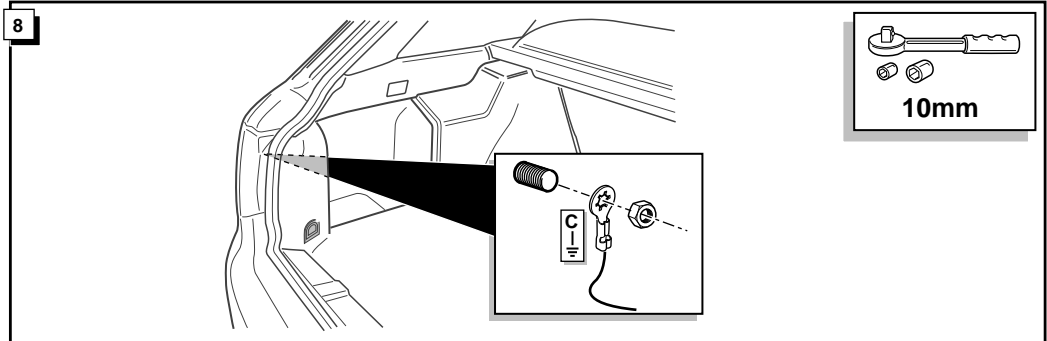
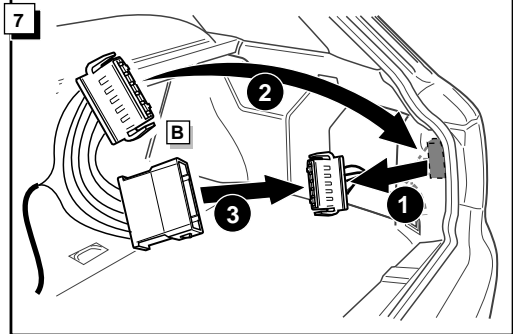
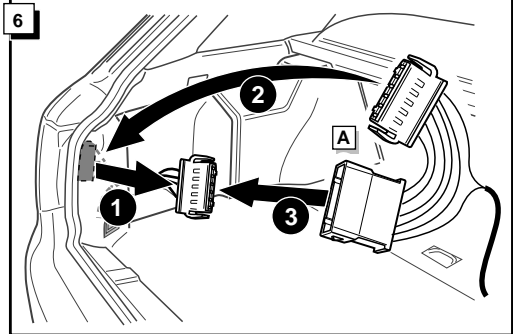
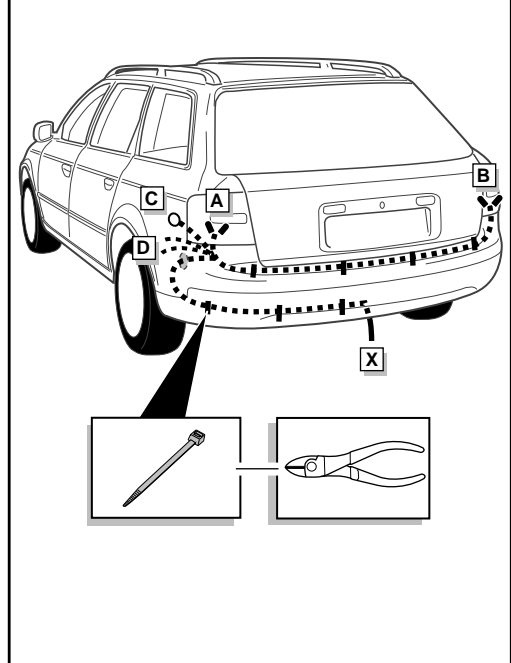
**! FUNKTIONEN KONTROLIEREN !**  
**CONTRÔLER LES FONCTIONS !**  
**CHECK FUNCTIONS !**  
**CONTROLEER FUNCTIES !**  
**CHECK FUNKTIONERNE !**



**INFO**



**ROUTING**



	D	FR	GB	NL	DK
1 = L	GELB	JAUNE	YELLOW	GEEL	GUL
2 = 54-G	BLAU	BLEU	BLUE	BLAUW	BLÅ
3 = 31	WEIß	BLANC	WHITE	WIT	HVIT
4 = R	GRÜN	VERT	GREEN	GROEN	GRØN
5 = 58-R	BRAUN	MARRON	BROWN	BRUIN	BRUN
6 = 54	ROT	ROUGE	RED	ROOD	RØD
7 = 58-L	SCHWARZ	NOIR	BLACK	ZWART	SORT
8 = 58-B	GRAU	GRIS	GREY	GRIJS	GRÅ

